

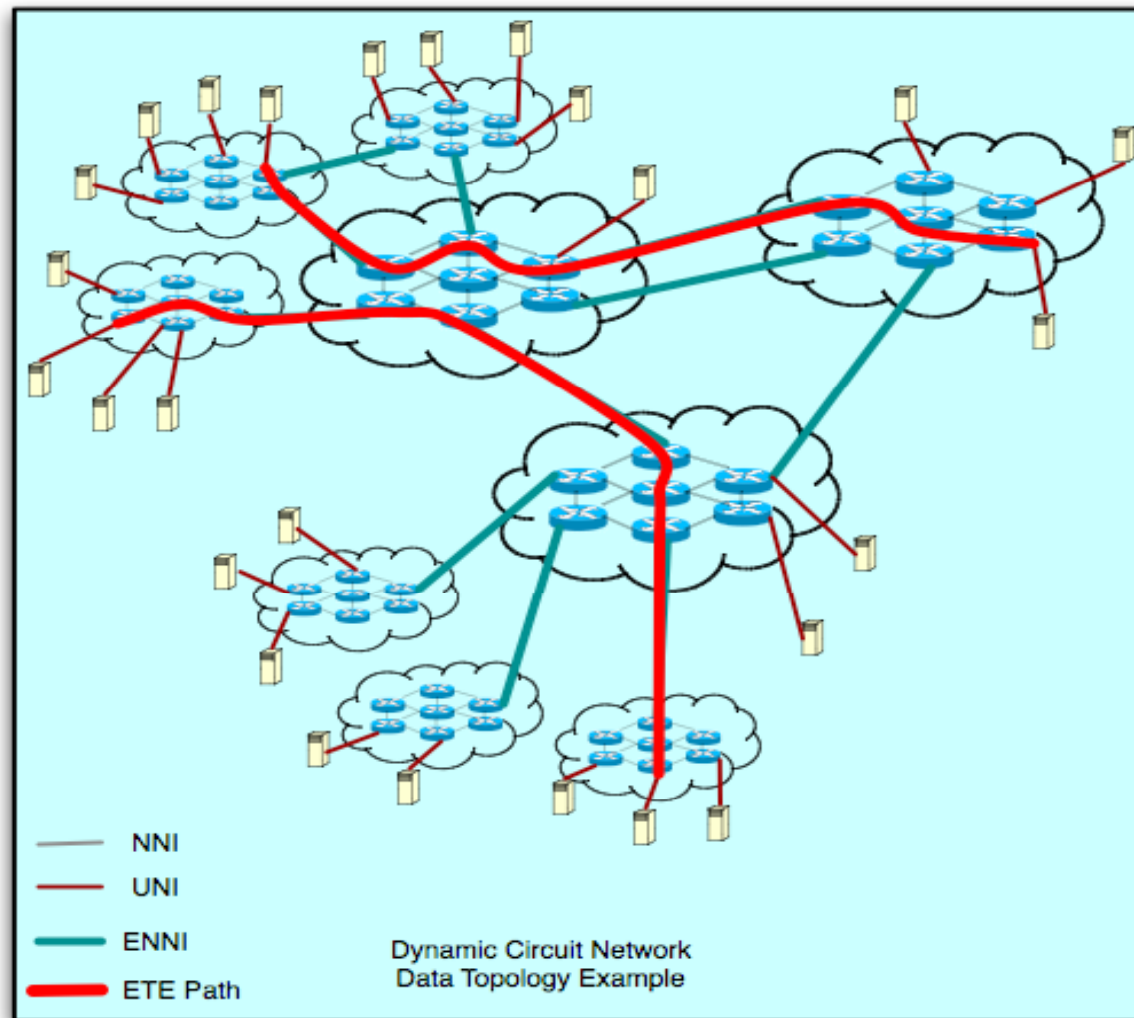
Interdomain Dynamic Circuit Network DICE Control Plane

John Vollbrecht, Internet2

Jrv@internet2.edu

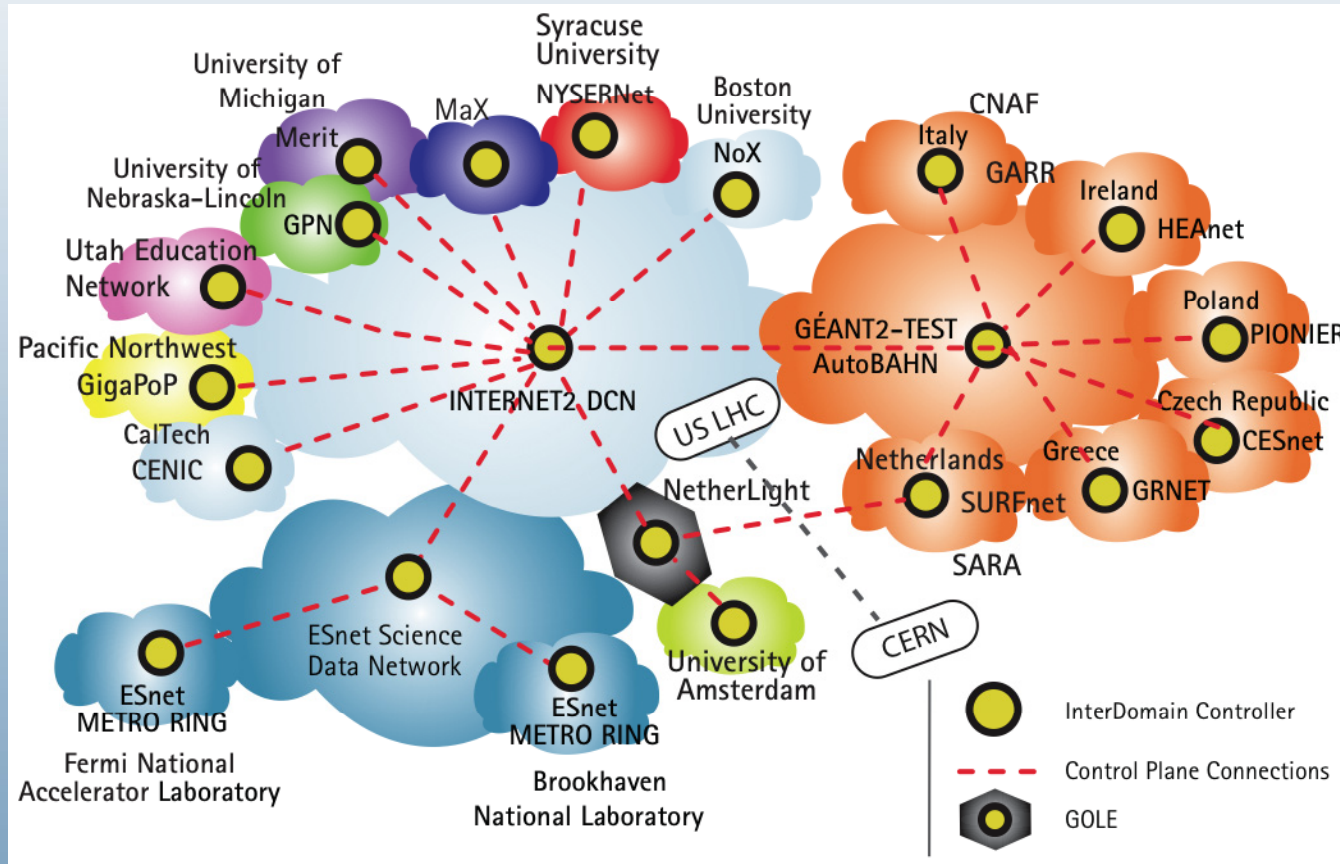


DCN User Connections



DCN Around the World

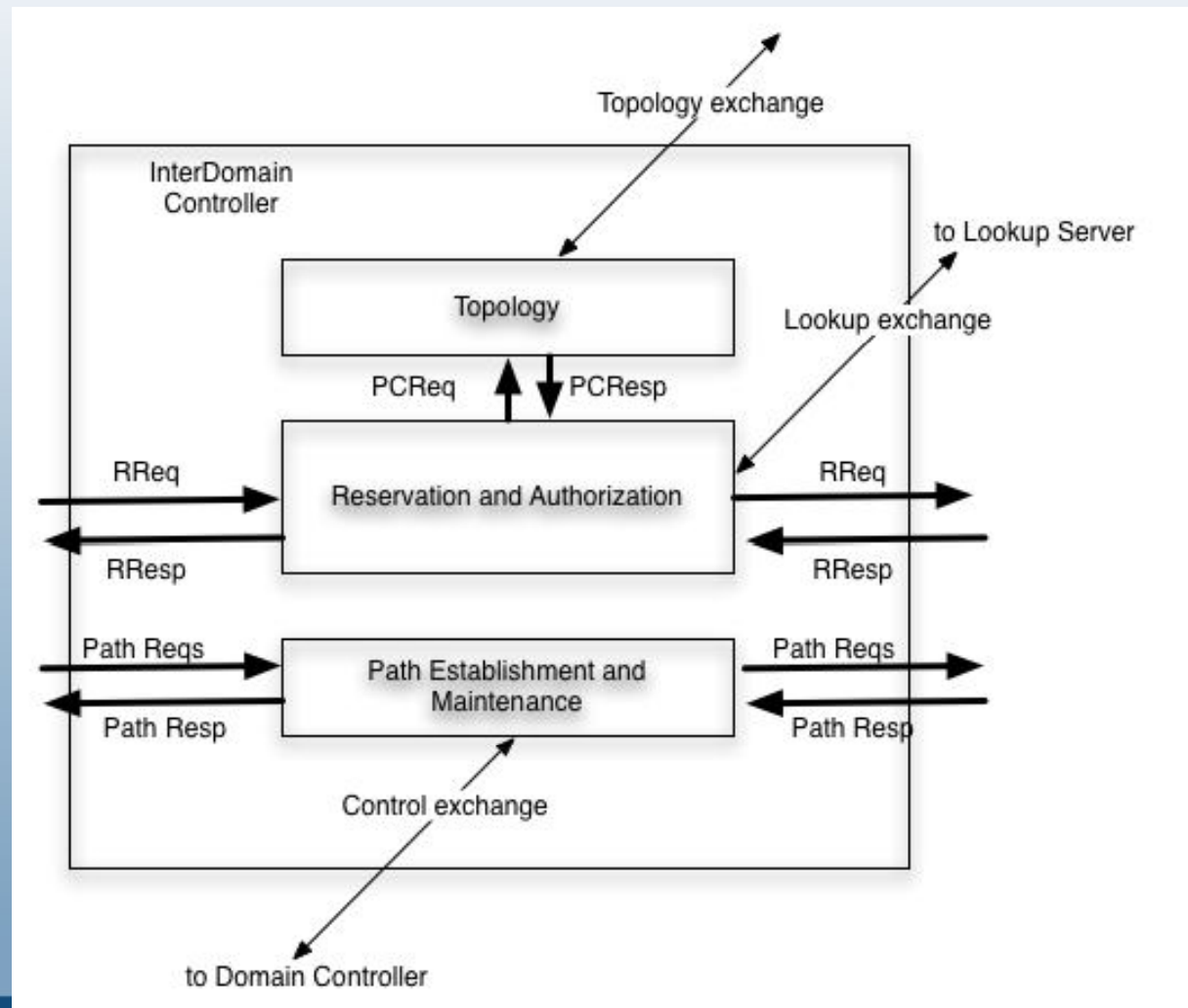
DCN and IP Networks



Dynamic Circuit - what do I get

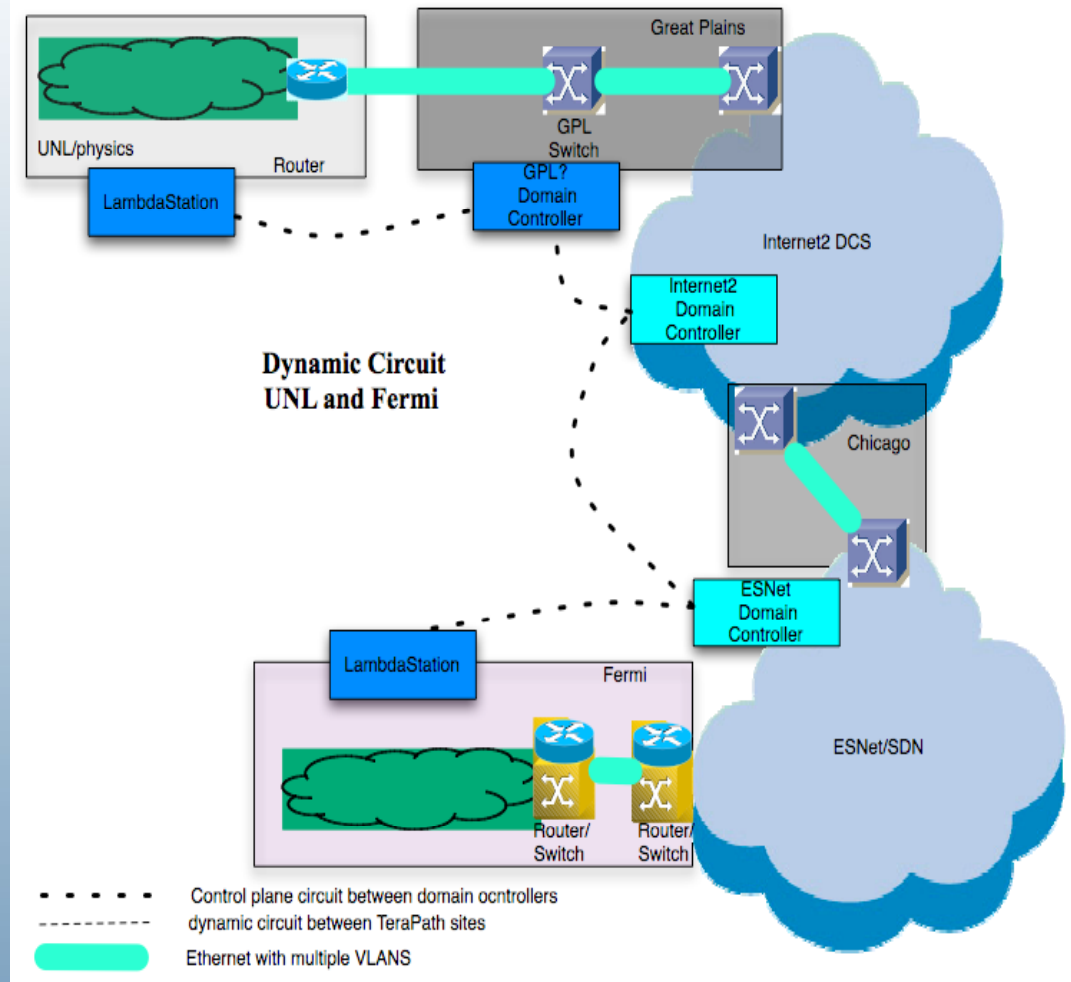
- EtE connection
 - Must supply IP addresses if needed
- For requested time period
 - Can request for time in the future
- With certain characteristics
 - Bandwidth
- Questions for the future
 - Pre-emption by priority
 - Scavenger circuits
 - Allocation by priority
 - Others - need input on what is important

IDC Architecture

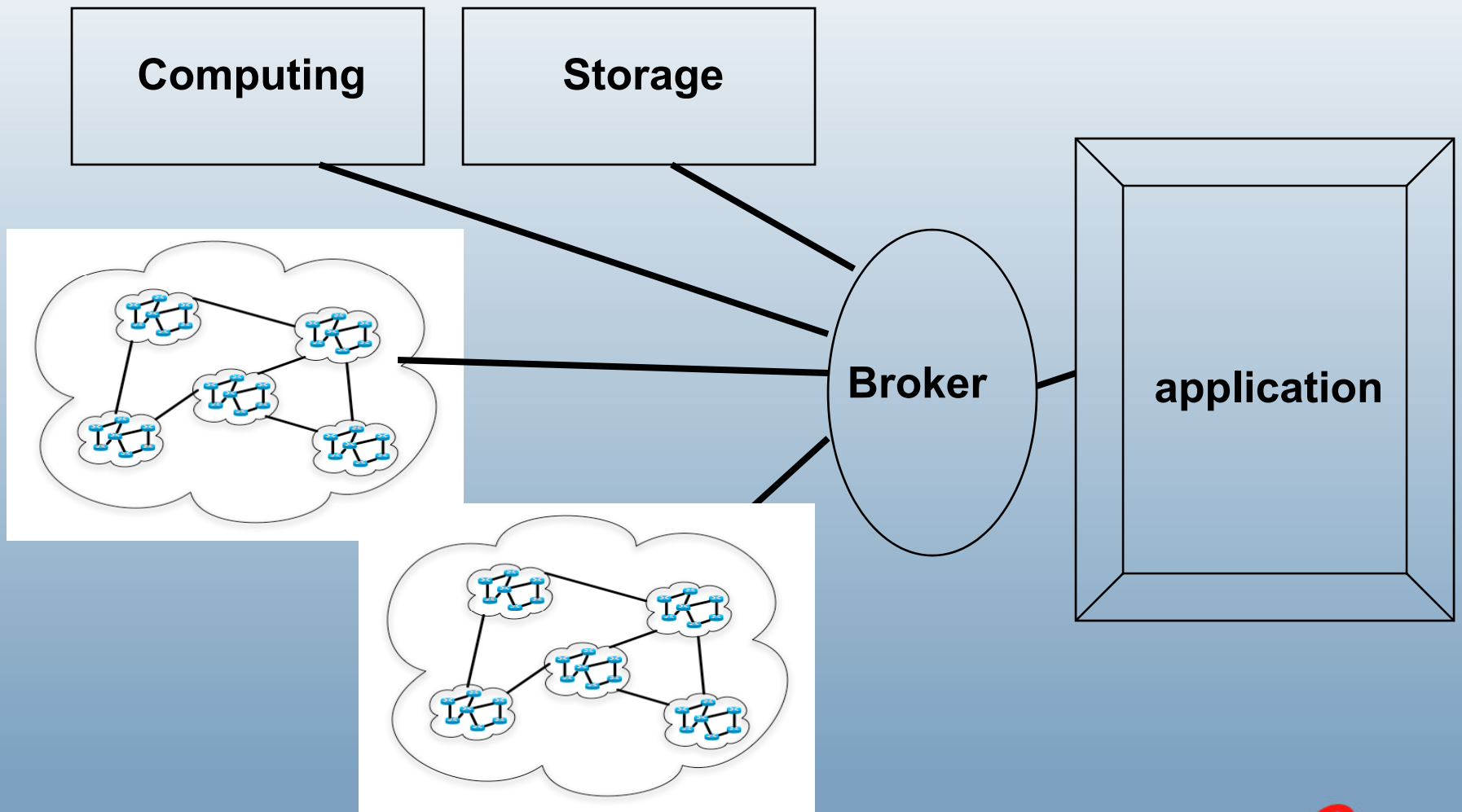


DCN and Middleware

- LHC - LambdaStation and TeraPaths
- TCP - Phoebus
- Middleware?



Networks as Resource



Collaboration

- Initial implementation with Internet2, ESNet and GEANT/AutoBahn - DICE control plane wg
- Currently collaborating through GLIF to create a common GNI-API
- Hope to collaborate with others
 - In development and definition of capabilities
 - In creating interconnected “domains”
- Look forward to working at OGF with others
- developing similar capabilities

Questions

Where can you learn more?

- DCN Software Suite
 - <https://wiki.internet2.edu/confluence/display/DCNSS/Home>
- Java Client API
 - <https://wiki.internet2.edu/confluence/display/CPD/OSCARS+Client+Java+API>
- Test IDC Guide
 - <https://wiki.internet2.edu/confluence/display/DCNSS/Internet2%27s+Test+IDC>
- Obtaining a Test Certificate
 - <https://wiki.internet2.edu/confluence/display/CPD/How+to+Request+an+IDC+User+Certificate>